



Share This:  

## Gomde is Growing!

As a volunteer-supported organization, it is our shared vision and our joyful work that holds us together. This year, all of the volunteers and the Board of Directors have made incredible progress in our efforts to make these precious teachings and retreat facilities available to everyone. This newsletter contains important updates about all of our new projects.

We hope that you'll enjoy it!

---

## Tara Cottage Opens for Retreat

Gomde's newest retreat facility opens for rental June 1. The remodeled Glass House is now named **Tara Cottage**, in loving honor of Green Tara and the new practice series from Chokyi Nyima Rinpoche.

One of the three root causes for enlightenment is a supportive environment. The constant bombardment of distractions, worries, and endless activities creates obstacles to the development of our practice. All the Rinpoches who have come to Gomde have urged us to create some time in our lives for solitary retreats. The best places have the blessings of many masters, a supportive environment, great beauty and remote location. We are fortunate that Rangjung Yeshe Gomde California has all these criteria.

Separated from the River House by a privacy wall, the interior is a spacious studio of about 400 square feet, with full kitchen, bath and walk-in-closet. Meditators can make themselves both self-sufficient and very comfortable in this serene space. Large glass windows offer a lovely view of the river through the trees, and the sound of the rushing water below provides a soothing



*The newly remodeled Tara Cottage.*

---

## 2011 Program Schedule

### [Lama Tsultrim Sangpo](#)

**June 10-12** Green Tara Practice

**July 1-5** Tonglen

**Aug 12-14** Ocean of Amrita  
Study Group

### [A History of Buddhist Tantra with Catherine Dalton & Ryan Damron](#)

**July 22-24** This course will open a window into the world of Tantra in South Asia.

### [Chokyi Nyima Rinpoche](#)

**August 23**

*Five Powers: The Art of Living and Dying. (At Orgyen Dorje Den in Alameda, CA)*

[Subscribe](#) to our email list

The daily rate for Tara Cottage is \$85, \$510 per week, \$2040 per month.

Thanks to the many contributors who donated to this effort, and to Onju Updegrave for overseeing the remodel.

For those especially interested in sky meditation, the **Retreat Hut** has also been redone. Perched on the edge of a cliff overlooking the Eel River below, the retreat hut is a special site for day meditation. It's also possible to arrange overnights here.

**Tent cabins** offer a very affordable summer retreat option. Situated on wooden platforms scattered throughout the shady campground, tent cabins are equipped with cots, rugs, dressers, and lamp. The showers and Portapotties are operative. Tent cabin rental is \$35 a day, which includes meals.

Meals can be delivered to those who want complete solitude, or retreatants can dine with the staff in the dining tent. All retreatants are welcome to join Gomde daily practices and Kumara and Lojong classes.

The River House is currently booked through January 2012. Fees for the River House are \$65 per day, \$390 per week, and \$1560 per month.

To make a reservation please contact Ani Marcia at [adminassist@gomdeusa.org](mailto:adminassist@gomdeusa.org).

---

## News From The Land

I know we are taught that everything is always changing, but it certainly appears that some things stay the same. I'm referring of course to the Spring weather up here and the fact that, as usual, we're busy dodging raindrops. What is different this season is that those raindrops have caused things not only to get wet, but unfortunately to slide.

You've no doubt heard about the big landslide that blocked highway 101 just North of here with ten feet of slippery, slimy mud? Well, we had our own miniature version of that in two locations here at Gomde. First was a spot on the road between the middle house and the Lama house right past the curve at Bardo Bend, where a giant oak tumbled onto the road dragging with it a pile of rocks and mud. Lee opened it up with his

**August 24-27**

*Green Tara: Treasury of Triple Excellence*

**August 27**

*Ocean of Amrita Ngakso Puja*

**August 26-30**

*Dzogchen Intensive: Enlightened Compassionate Wisdom*

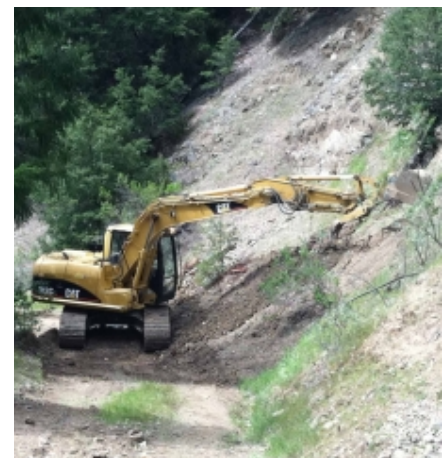


**Dzigar Kongtrul Rinpoche**

**October 7 - 9, 2011**

*Uttaratantra Shastra: Teachings on the enlightened essence of mind.*

---



***Ipo saves the day!***

---

[Subscribe](#) to our email list

going to need to be cleared with a big excavator, which is, as we speak, sitting on a trailer in the Shedra meadow waiting for a sunny day to begin work.

An even larger slide occurred on the back road that goes by the mother tank, through Shedra meadow down to the Lama house. There more of the water-saturated mountain slumped down almost completely covering the road with debris. This will be a much bigger job for the excavator especially since these things have a way of falling more once you start digging into them. But the man operating the equipment, our friend and neighbor Ipo (brother to Donny, the man who hung off the cliff with ropes and a chainsaw and cleared our retreat hut view) assures me that he can clean it up no problem, once he gets in there. Like I said, he'd prefer to have a couple of days of sunshine in a row before beginning to work, but nobody up here is holding their breath waiting for that, so he might just be working in the rain, which he says is OK too.

Work is continuing on the other buildings and looks like it'll wrap up soon. They're putting the final touches on the Tara Cottage (Yea!!!) and it's all looking beautiful! The new flooring is here and ready to install in the Sangha House, and there's so much going on at the Lama House, all at the same time, that it's hard to keep it all straight! Right this very moment we've got the flooring guy and the wall guy down there and also Lee cutting trim for the bedroom and our wonderful volunteer Mary Waite painting in the bathroom! And that's after Joanne spent all weekend down there painting as well! This is going to be such a wonderful birthday present for Rinpoche!

So those are the highlights of the projects from Gomde and what has turned out to be a very busy winter and spring so far. Here's hoping that this letter finds you all happy and well and we're looking forward to seeing you during work week!

-- Kelly Bond

---

## Personal Retreats & Programs for Young Adults

**Lama Tsultim Sangpo** will be in residence from May 25 to August 31st to serve as a practice guide for all endeavors. He will be able to aid in the organization of a schedule and provide support for any questions or obstacles which might arise during



*Work like Joanne,  
and all will be well with the world.*

### ***The Gomde Annual Work Week May 20-30, 2011***

*We need help setting up the Dining Tent and Tent Cabins, finishing the remodel of the Lama House for Rinpoche's birthday present, painting, carpentry, landscaping, cooking during the week, preparing the houses for rent, office work for the seminars, setting up File Maker Pro, and much more. You have a skill- we can use it!*

*Perks include free lodging and meals, daily group practice, and access to Lama Tsultrim for practice support and guidance.*

Contact [adminassist@gomdeusa.org](mailto:adminassist@gomdeusa.org)  
or [707-925-0201](tel:707-925-0201)

---

[Subscribe](#) to our email list

August for teachings and support. Ryan Damron, Catherine Dalton, or Tim Hinkle - all students from the Rangjung Yeshe Institute in Kathmandu, Nepal will be available for questions on Tibetan and Sanskrit cultural and historical issues. The Kumara Crews will serve as hospitality support for retreatants as necessary.

### Personal Retreats

The retreat center will be open for private retreats from June 1 to August 20. . Retreatants will be able to design personal retreats (shamatha/vipassana, Dzogchen, Tonglen, text study, etc.) under the guidance of Lama Tsultrim as desired. Retreats may be relatively solitary with support from the Kumara Housekeeping Crew or more relaxed with attendance at the Lojong classes and/or Gomde daily group practices. Service practices are also possible. The daily fee of \$35 includes a tent cabin and meals. The Tara House, which is fully equipped, has limited availability during the summer but is conducive to a solitary retreat. Reservations may be made through [adminassist@gomdeusa.org](mailto:adminassist@gomdeusa.org)

### Practice and Daily Life in a Dharma Community

The Kumara Summer Program for young adults combines all forms of practice within the boundaries of our Dharma community. Kumara will remain open for enrollment through July 27. The program consists of daily practices, a Lojong study group for 'The 37 Practices of a Bodhisattva', discussions on integrating mind training with everyday life, and work/service to Gomde and the retreatants. A 2-3 day solitary retreat is encouraged. Two Tibetan translators - Tim Hinkle and Catherine Dalton - will be on site for those wishing some help with Tibetan. There is a one month commitment to this program. Please visit the [website](#) or [Facebook](#) for more information. Or email [kumara@gomdeusa.org](mailto:kumara@gomdeusa.org)

## A Beautiful Story From Erik Pema Kunsang

**This is the story of what Tulku Urygen Rinpoche told us on the 18th of December, the morning after his first health problems began to act up.**

Graham, Marcia, Brigid and I went into to his room at the top floor of Nagi Gompa to make an auspicious connection for the Chokling Tersar place in the United States. We all offered white scarves and I reminded him that many years ago he had put the idea in our minds that USA would be the last free country in the



*Lama Tsultrim Sangpo is a quiet well of wisdom, a kind and generous guide, and a pretty good swimmer.*

[Click here to learn more about the Kumara Summer Program.](#)



*This is the most popular photo from our Facebook page. What does it mean?*

[Facebook us!](#)

Hello readers! My name is Tobin, and I'm the new Communications Manager for Rangjung Yeshe Gomde California.

Kerry Moran, our amazing, dedicated Communications Manger has tirelessly overseen Communications and done a fabulous job. This entails advertising, website, all printed materials, flyers, and working with all the other areas for content. Her parting gift to our Sangha will be the newly refurbished website... soon. If I fill just one of her shoes, we'll all be lucky!

We are very grateful for her hard work and devotion to RYGC.

[Subscribe](#) to our email list

of acquiring a place to keep books and sacred substances.

We explained then our present plan for setting up a small practice community with individual retreat huts and a central structure where teachers could come and stay once in a while.

Upon hearing this he showed great enthusiasm, put his two thumbs up, one above the other in the top-of-the-top-mudra, and said, “Ngönney yagpo yonggi redah! Pentok chenpo yonggi rey!” “It will definitely turn out well! There will be great benefit!”

He added that it would also become a place where all the translations of practices we had made over the years would be put to full use and that “your labors will bear fruit.”

Tulku Urgyen Rinpoche then said he would keep our donations and that he wanted to give us back the scarves which he then placed around our necks.

He was about to say much more but since his doctor was at the door and Ani Maya insisted we leave, nothing more was said.

That was our last collective communication with Rinpoche.

– *Erik Pema Kunsang*

Rangjung Yeshe Gomde | 66000 Drive Thru Tree Road | P.O. Box 162 | Leggett, CA 95585  
tel: 707-925-0201 | [information@gomdeusa.org](mailto:information@gomdeusa.org) | [www.gomdeusa.org](http://www.gomdeusa.org)

Thanks, Kerry, from all of us.

The email address to send announcements, questions, and pretty much everything Gomde is still [information@gomdeusa.org](mailto:information@gomdeusa.org). From there, I'll make sure it goes to the right person.

Keep in touch!

---

P.S. Joanne and Dorje asked me to let everyone know that they have received three! offers of a sewing machine and a generous donation to buy notions for their proposed sewing workspace at Gomde. They thank you for your incredible support.

This email was sent to [email]. To ensure that you continue receiving our emails, please add us to your address book or safe list.

**manage** your preferences | **opt out** using **TrueRemove®**  
Got this as a forward? **Sign up** to receive our future emails.



[Subscribe](#) to our email list